

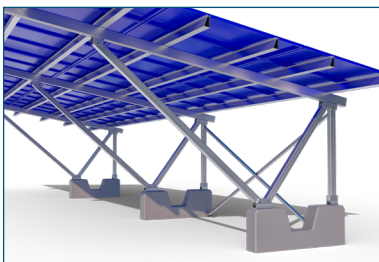
CANTILEVER CARPORT ALU-MAX PRE-CAST



Resilient

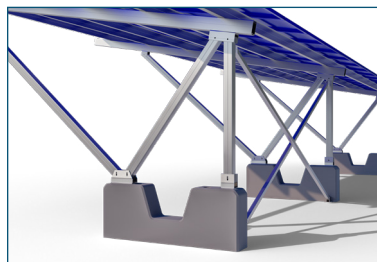
Engineered for resilience in high-traffic zones to minimise structural damage in the case of accidental impacts.

Application	Carport
Module Orientation	Portrait (preferred/cost-effective) and Landscape
Module Layout	Portrait: 3V panels (single access) Portrait: 5V panels (double access) Landscape: 4H - 5H panels (single access) Landscape: 8H - 9H panels (double access) Custom
Module Inclination	Single access: 0 - 10 degrees Double access: 0 - 8 degrees
Table Length	Site dependent
Support Spacing	7500mm support spacing for 3 parking bays End overhang of up to 2500mm
Anchoring Method	Reinforcing bars from foundation tie into pre-cast base M16 hex bolts used to fasten supports onto pre-cast base Fixations and typical foundation designs are provided Pre-cast base is provided
Standards	SANS 10160 - 1-7 Structural loading design SANS 10162 - 1,2 Structural steel design SANS 121 - Hot dip galvanised coatings Eurocode 9 - P1 Design of aluminium structure
Material	Purlins: Aluminium (6063 T6)/(6005 T5) Rafters: Aluminium (6063 T6)/(6005 T5) Columns: Pre-cast Fixations: Stainless steel (SUS304) *(SUS316) available *Various coatings are available, including anodising, hot dip galvanising, powder coating, and paint.
Local Content	Local content up to 90% if required (project specific)
Warranty	10 years standard



Engineered Portability

This solar carport structure delivers transport simplicity, setting new standards for on-site installation agility.



Practical Comfort

Our Alu-Max Precast solar carport structure pairs practical pricing with the ease of ergonomic design.