

Lumax Energy's Single-Axis Tracker offers seamless installation and intelligent control for efficient solar energy production, with minimal maintenance and long-term reliability.

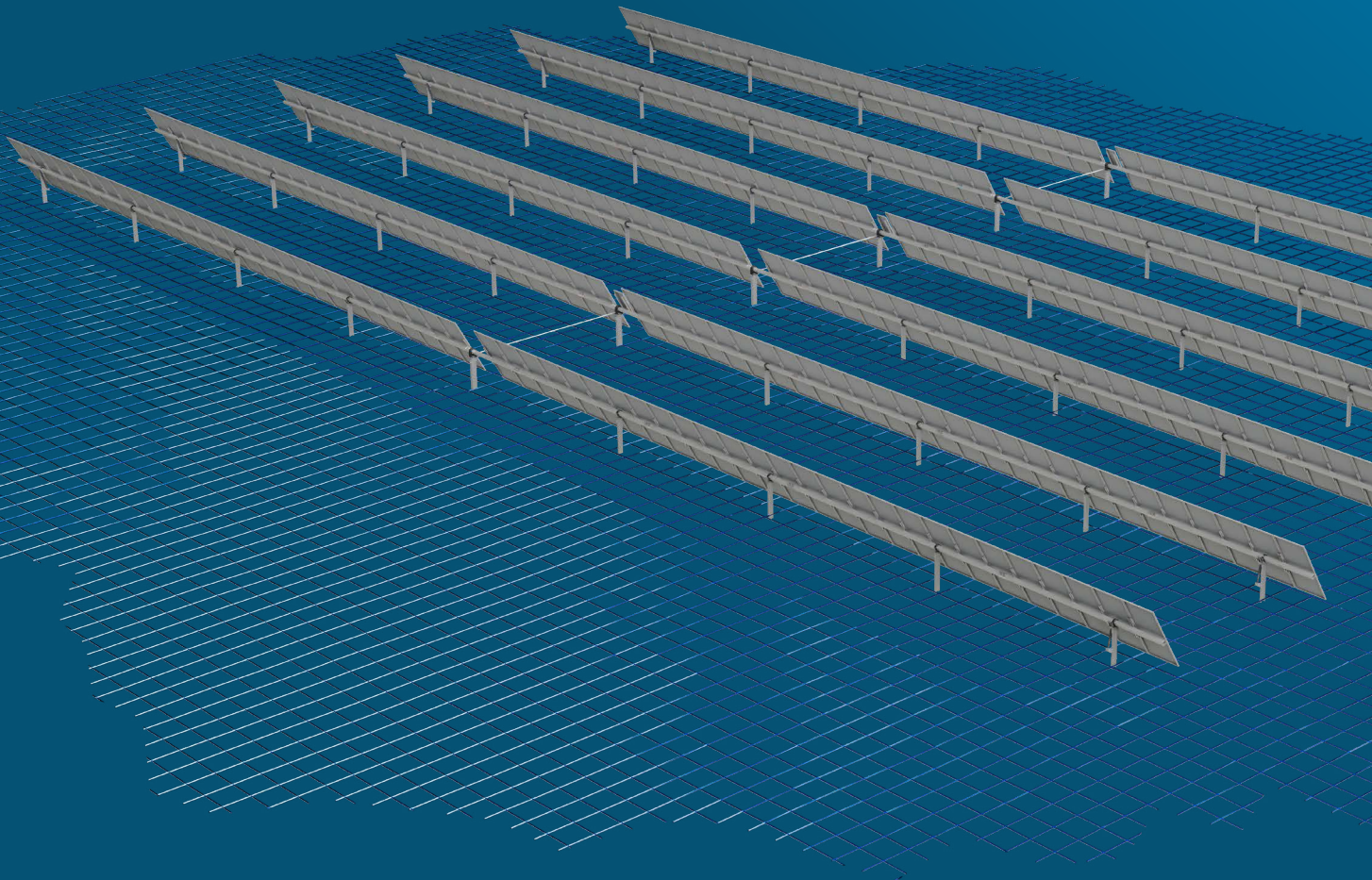
SINGLE AXIS TRACKER

Intelligent Control

Easy installation, compatible with all framed PV modules, and smart features for efficiency.

Low Maintenance

Minimal upkeep with IP65 protection, annual checks, and a lubrication-free system.



Optimised Design

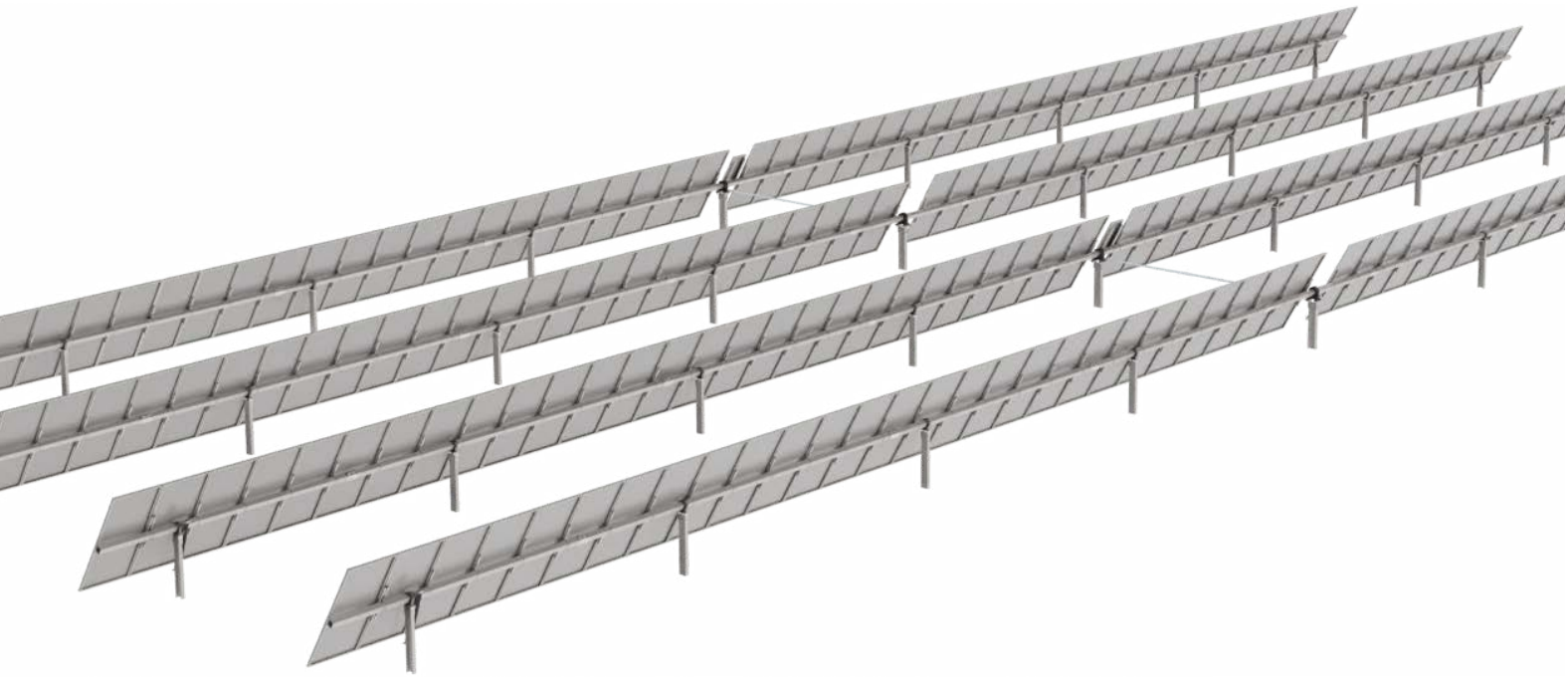
Structure is designed and optimised according to site conditions and client requirements.

Network Control Unit

Allows SCADA integration coupled with a weather station for wind speed monitoring.

Structure Configurations

Linked table solutions and independent table solutions provided depending on site layout.



ACCURACY OF TRACKING: $\pm 1^\circ$

SAT SINGLE AXIS TRACKER

Lumax Energy's Single Axis Tracker simplifies solar energy deployment with Effortless Installation, wide tolerance, and compatibility with all framed PV modules. Its Intelligent Control system ensures optimal efficiency through wireless connectivity, astronomical tracking, and a backtracking algorithm.

With a high-torque slew drive and low maintenance requirements, including IP65 protection, this tracker guarantees reliable, long-term performance. Supported by flexible control characteristics, robust mechanical specifications, and comprehensive warranty coverage, it stands as a symbol of innovation in the solar energy industry.



CHARACTERISTICS



Control Characteristics

Tracker Type Independent: Single axis tracker (SAT)

Ground Coverage Ratio: 30% - 50% (*)



Mechanical Specifications

Tracking Range: $\pm 45^\circ$ to $\pm 60^\circ$ (GCR dependent)

Wind Speed Resistance: As per SANS 10160 - 3 (*)

Structural Materials: Structural steel

Coating Specs: Pre-galvanised, hot dipped galvanised and duo-coat

Bearing Type: Low friction polymer, self-lubricating bushing

Foundation Types: Ramming, pre-drilling

Topography Flexibility: Up to 15% N - S / E - W
Not limited (E - W angle is recommended to be as horizontal as possible to maximize production potential)



Dimension Specifications

Tracker Table Length: Maximum of 90 m (*)

PV Module Mounting Array Configurations: 1 Portrait

Configuration:

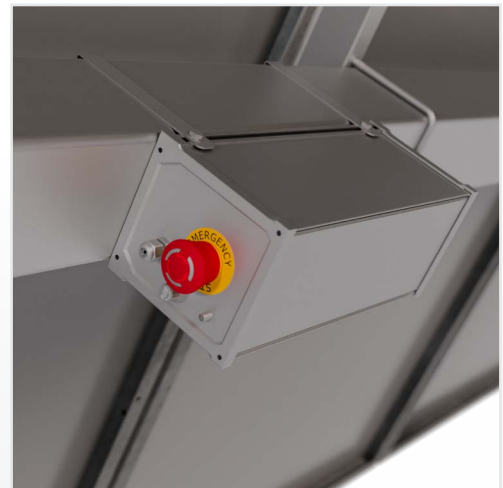
- Independent tables
- Linked tables



Warranty

10 years standard (structural)

5 years (dynamic components)



Click or scan for full TDS