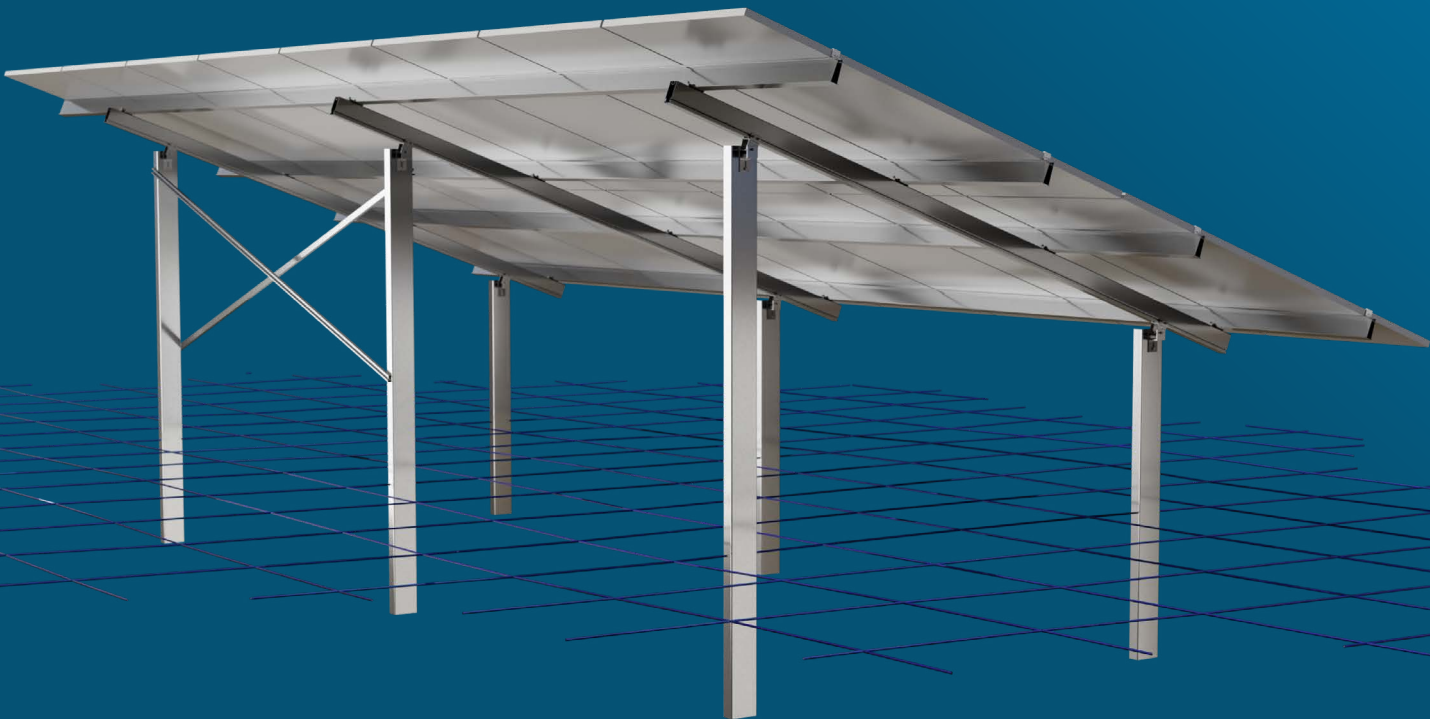


Introducing Lumax Energy's Ground Mount solutions. Seamlessly assemble your solar system with our user-friendly design and durable construction. Explore our cost-effective options, redefining simplicity and durability in solar installation.

# GROUND MOUNT STRUCTURES

### **Effortless Assembly**

Our Ground Mount structures offer quick and easy setup with minimal tools required, ensuring hassle-free installation for any project size.



### **Versatile Installation Options:**

Enjoy flexibility with both portrait and landscape module orientations, allowing you to customize the layout to suit your project's needs.

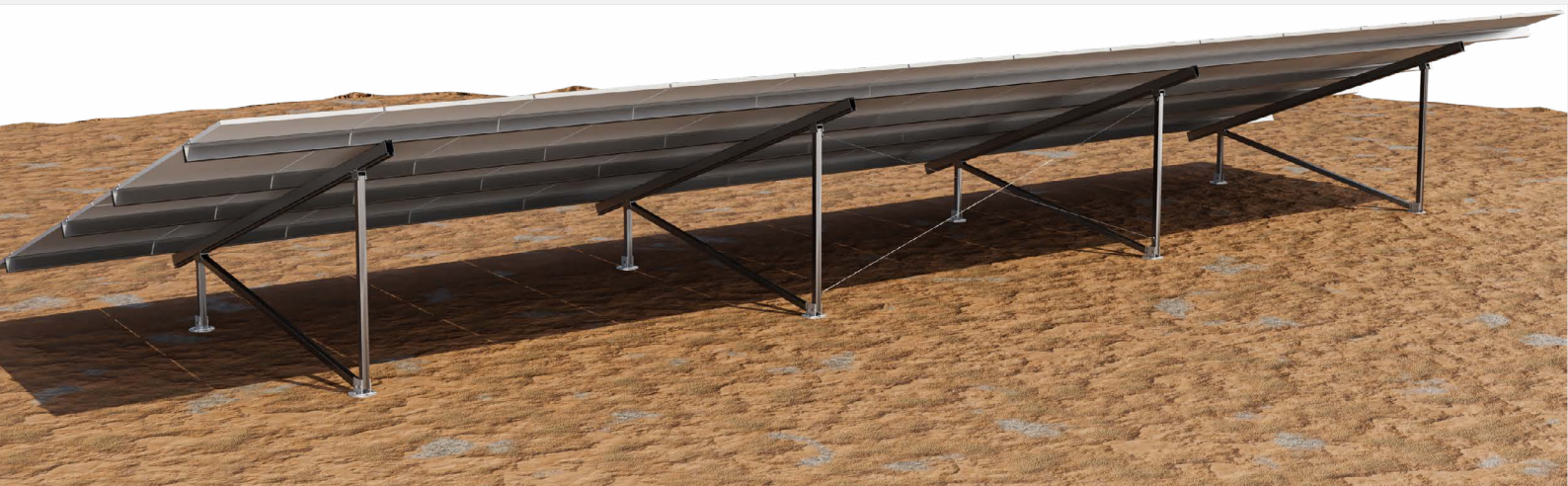


2V / 4H: 0 - 25 DEGREES  
3V / 5H: 0 - 15 DEGREES

## Ground Mounts **GROUND SCREW**

Lumax Energy's Ground Screw offers easy installation and robust design for fixed tilt ground mount applications. Accommodating both portrait and landscape module orientations, our screws feature a lego-like assembly with minimal tools required, making installation effortless even for large projects.

Designed to stand strong without traditional foundations, they ensure enduring performance, particularly in sandy sites. Lumax Energy prioritizes quality and reliability, providing peace of mind for your solar installation needs.



# CHARACTERISTICS



## Module Orientation

Portrait (preferred / cost-effective) and landscape



## Module Layout

**Portrait:** 2V - 3V panels (angle-dependent)

**Landscape:** 4H - 5H panels (angle-dependent)



## Anchoring Method

- Various lengths of ground screws and flanges are available
- 1200 mm standard flange ground screw
- 1600 mm standard and wide flange ground screw
- \*Bobcat with auger attachment and adapter used for installation.



## Warranty

10 years standard



Click or scan for full TDS



2V / 4H: 0 - 25 DEGREES  
3V / 5H: 0 - 15 DEGREES

## Ground Mounts **R90-S PILE**

Lumax Energy's R90-S Pile Ground Mount offers value-engineered affordability, maximizing your investment with reliable performance. Ideal for fixed tilt ground mount applications, it accommodates both portrait and landscape module orientations, providing flexible layout options.

With its sturdy design and various coatings available, this economical solution promises durability and longevity, ensuring your solar structure stands the test of time.



# CHARACTERISTICS



## Module Orientation

Portrait (preferred / cost-effective) and landscape



## Module Layout

**Portrait:** 2V - 3V panels (angle-dependent)

**Landscape:** 4H - 5H panels (angle-dependent)



## Anchoring Method

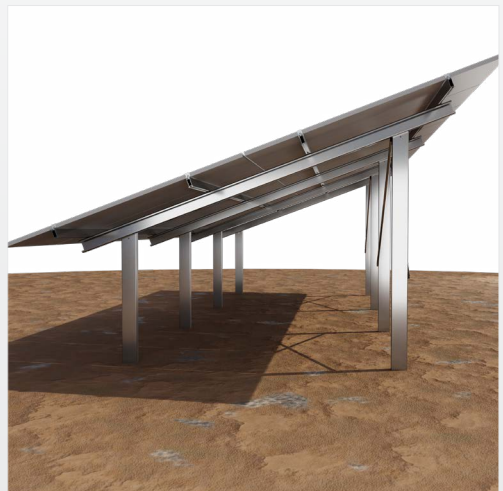
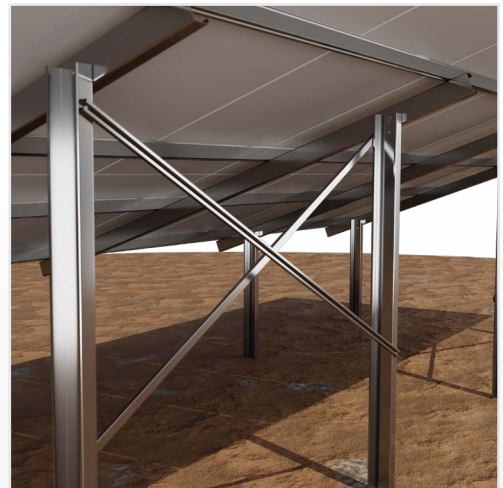
• Direct ramming (preferred)

\*Drill and concrete optional for difficult soil conditions.



## Warranty

10 years standard



Click or scan for full TDS



2V / 4H: 0 - 25 DEGREES  
3V / 5H: 0 - 15 DEGREES

## Ground Mounts **CONCRETE MOUNT**

The Concrete Mount offers a hassle-free solution for fixed tilt ground mount applications. Simplify your build with an uncomplicated installation process that eliminates the need for special equipment. Choose between portrait and landscape module orientations, with support for various panel layouts and inclinations.

Our Concrete Mount ensures durability with its anchoring method using chemical anchors into concrete foundations. Crafted with high-quality materials and coatings, our structures are built to last, promising enduring performance.



# CHARACTERISTICS



## Module Orientation

Portrait (preferred / cost-effective) and landscape



## Module Layout

**Portrait:** 2V - 3V panels (angle-dependent)

**Landscape:** 4H - 5H panels (angle-dependent)



## Anchoring Method

- Chemical anchor M12 threaded rods into concrete foundations
- Chemical anchor, M12 threaded rods, fixations, and typical foundation designs are included
- Pre-cast / foundations are not provided



## Warranty

10 years standard



Click or scan for full TDS

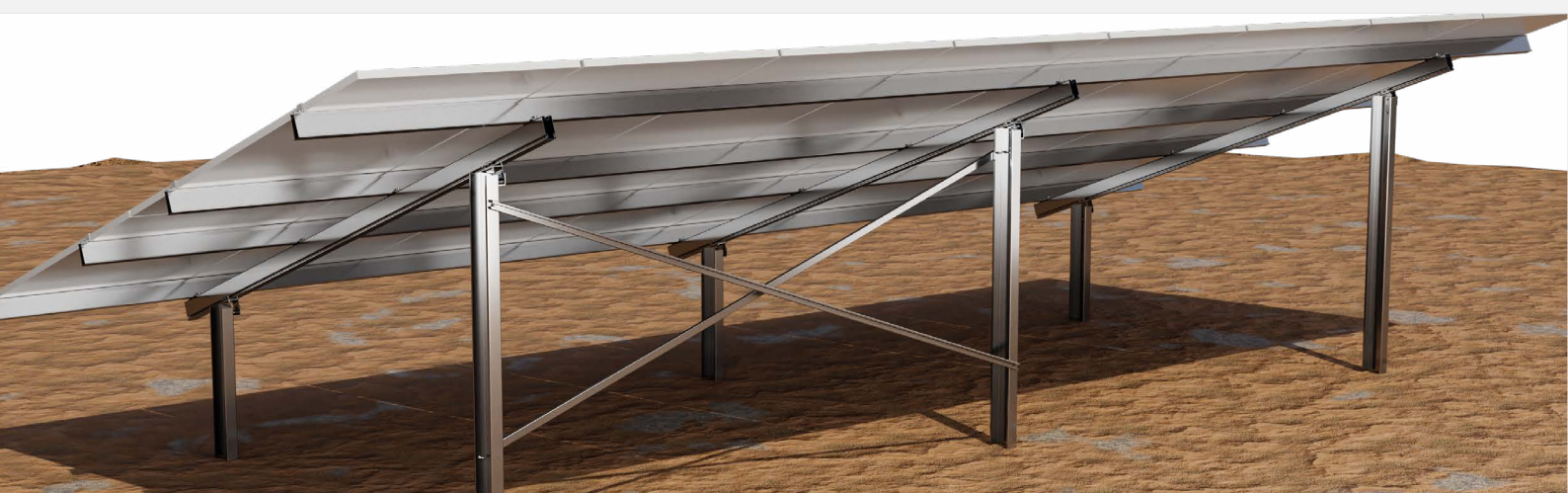


2V / 4H: 0 - 25 DEGREES  
3V / 5H: 0 - 15 DEGREES

## Ground Mounts **R112 PILE**

Our R112 Pile Ground Mount Structures offer fixed-tilt solutions designed for versatile module orientations in portrait or landscape layouts. Customizable to meet site-specific needs, these structures are built with durable aluminum and stainless steel components, ensuring longevity and resilience in any environment.

With swift installation, superior local content of up to 90%, and compliance with global and local standards, our ground mounts guarantee efficiency, reliability, and a 10-year warranty for your solar projects.



# CHARACTERISTICS



## Module Orientation

Portrait (preferred / cost-effective) and landscape



## Module Layout

**Portrait:** 2V - 3V panels (angle-dependent)

**Landscape:** 4H - 5H panels (angle-dependent)



## Anchoring Method

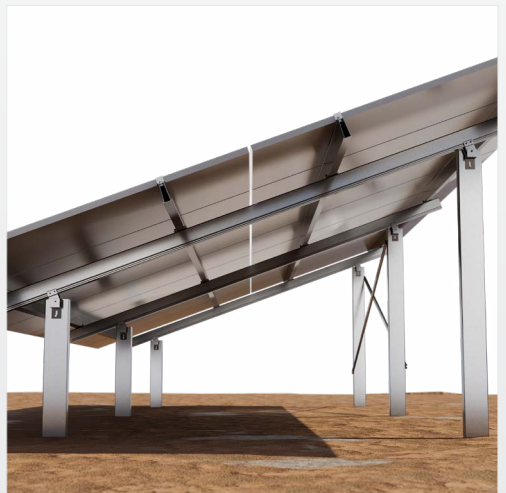
Direct ramming (preferred)

\*Drill and concrete optional for difficult soil conditions.



## Warranty

10 years standard



Click or scan for full TDS

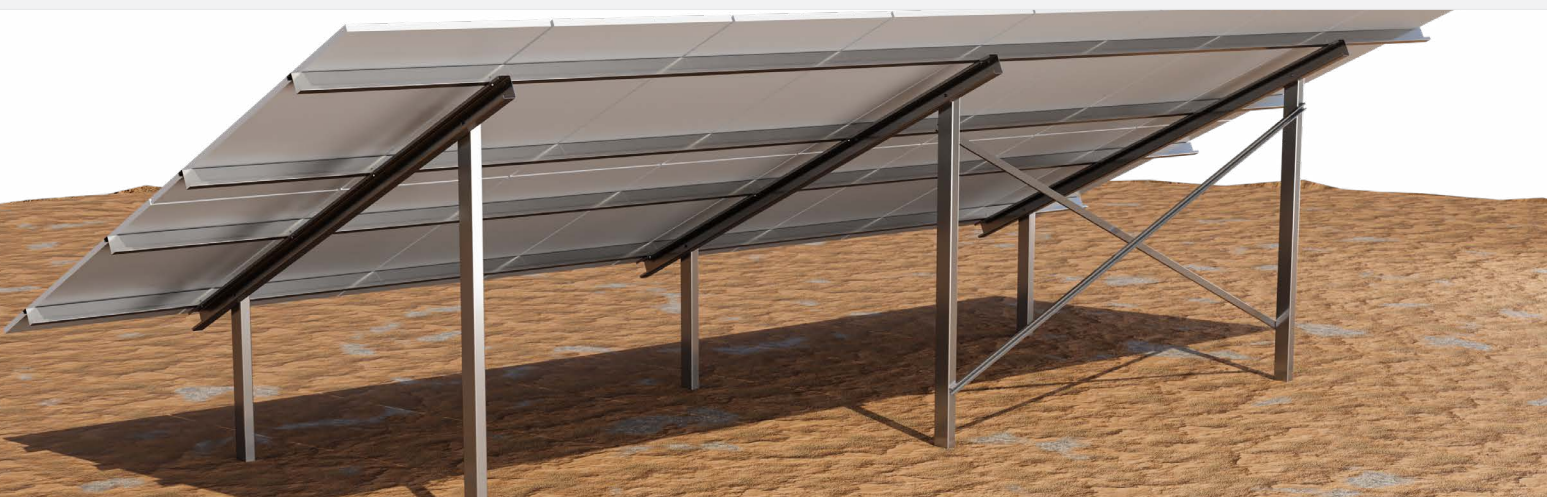


2V / 4H: 0 - 25 DEGREES  
3V / 5H: 0 - 15 DEGREES

## Ground Mounts **STEEL-MAX**

Our Steel-Max Ground Mount Structures, crafted entirely from high-grade steel, deliver unmatched durability and cost-effectiveness. Designed for fixed-tilt applications with flexible module orientation options, these structures are customizable to suit site-specific requirements.

Engineered for swift installation and optimal performance, they meet global and local standards, with a 10-year warranty ensuring long-term reliability. With local content of up to 90%, Steel-Max is the ideal solution for robust, adaptable solar projects.



# CHARACTERISTICS



## Module Orientation

Portrait (preferred / cost-effective) and landscape



## Module Layout

**Portrait:** 2V - 3V panels (angle-dependent)

**Landscape:** 4H - 5H panels (angle-dependent)



## Anchoring Method

Direct ramming (preferred)

\*Drill and concrete optional for difficult soil conditions.



## Warranty

10 years standard



Click or scan for full TDS